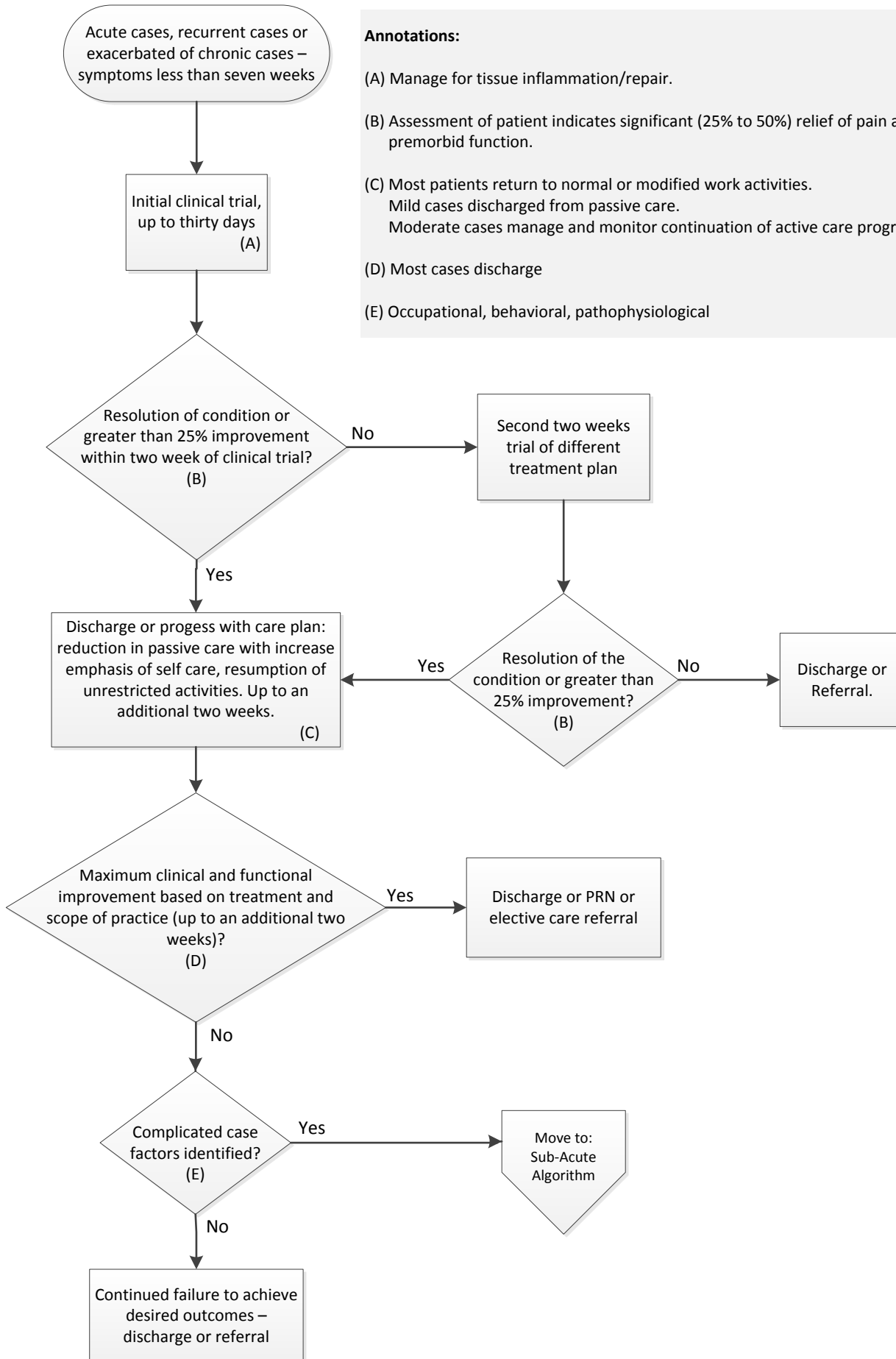


Acute Care Algorithm



Annotations:

(A) Manage for tissue inflammation/repair.

(B) Assessment of patient indicates significant (25% to 50%) relief of pain and progress towards pre-morbid function.

(C) Most patients return to normal or modified work activities.
Mild cases discharged from passive care.
Moderate cases manage and monitor continuation of active care program.

(D) Most cases discharge

(E) Occupational, behavioral, pathophysiological

